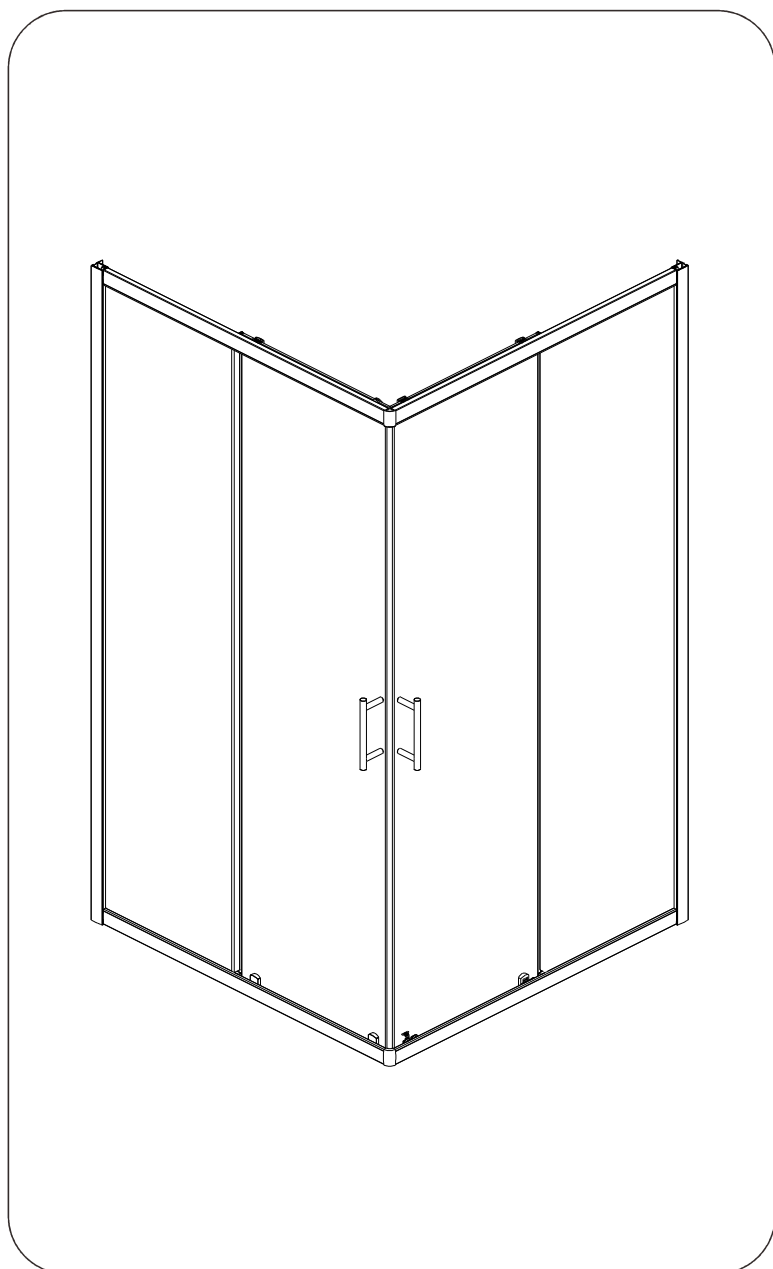


Corner Entry

INSTALLATION INSTRUCTIONS



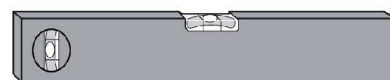
Tools Required



Drill



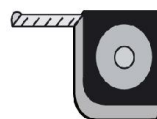
6mm Masonry Drill
3.2mm HSS Drill



Spirit level



Sealant Gun



Tape Measure



Pencil



**PH2 TYPE
Screwdriver**

Please not hand tools **NOT** supplied.

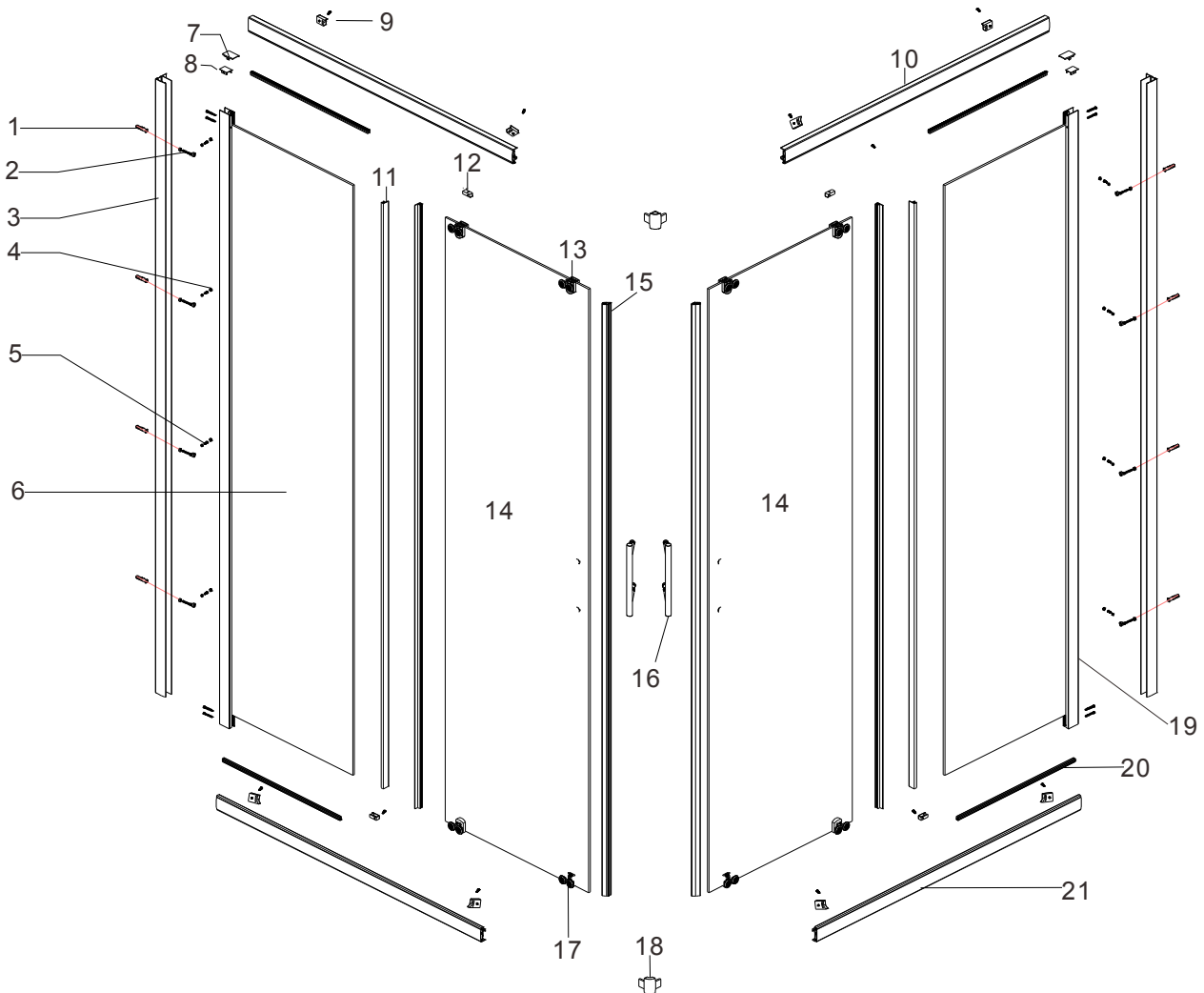
IMPORTANT

These instructions assume that installation is done against solid/tiled walls.

The wall plugs supplied with the installation kit are for use on solid walls. Hollow or stud-partition walls will require alternative fixings. Please consult with a reputable trades person or hardware supplier for the correct type of fixing.

It may also be necessary to consult your tiling supplier about the correct method drilling your tiles.

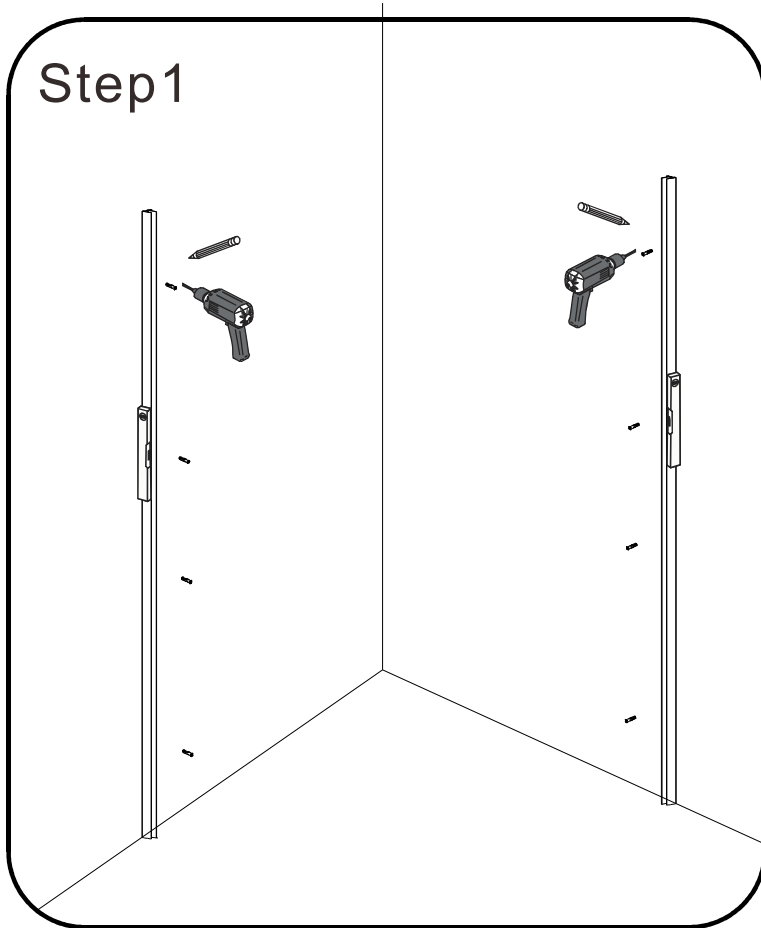
Components And Box Contents



NO.	Code	Description	Qty	NO.	Code	Description	Qty
1	BNCE-01	Wall Plug	8	12	BNCE-12	Chrome Piece	4
2	BNCE-02	Screw M4*30	16	13	BNCE-13	Top Rollers	4
3	BNCE-03	Wall Profile	2	14	BNCE-14	Moving Panel	2
4	BNCE-04	Screw cover Caps	2	15	BNCE-15	Magnetic Seal	2
5	BNCE-05	Screw M4*10	20	16	BNCE-16	Handle	2
6	BNCE-06	Fixed Glass Panel	2	17	BNCE-17	Bottom Roller	4
7	BNCE-07	Cover Caps A	2	18	BNCE-18	Corner Jointer	2
8	BNCE-08	Cover Caps B	2	19	BNCE-19	Fixed Profile	2
9	BNCE-09	Stopper	4	20	BNCE-20	Seal	2
10	BNCE-10	Top Rail Profile	2	21	BNCE-21	Bottom Rail Profile	2
11	BNCE-11	Vertical Seal	4				

Installation Steps

Step1

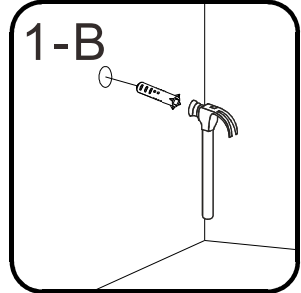


1-A

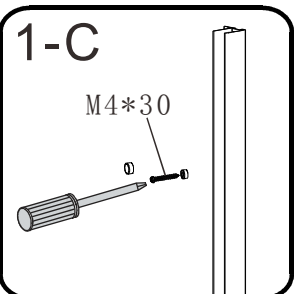


$\Phi 6$ drill bit

1-B



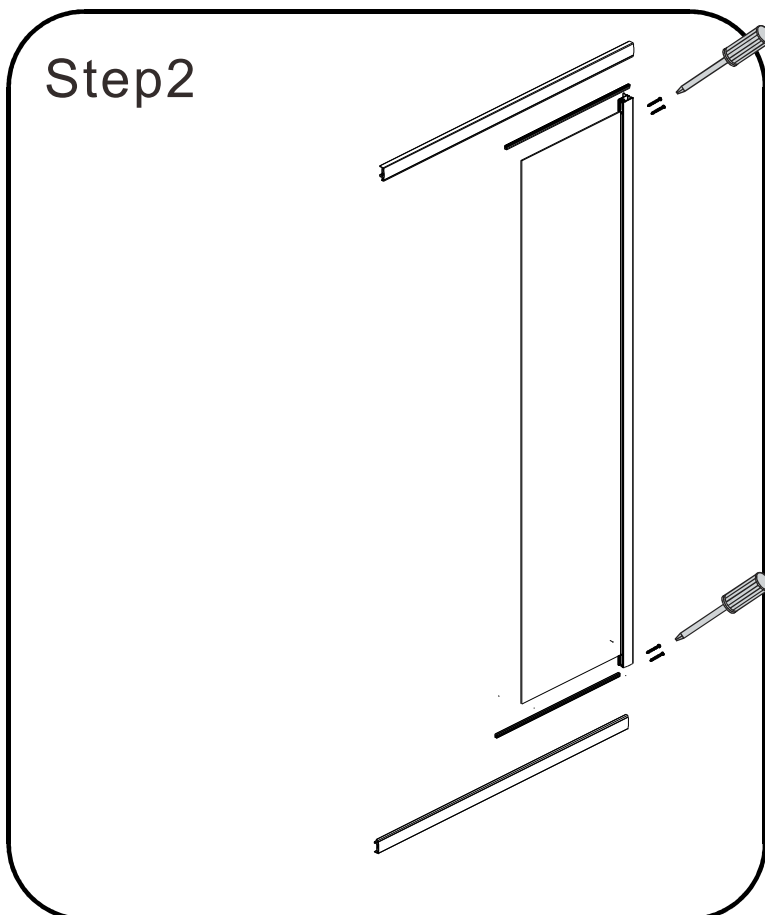
1-C



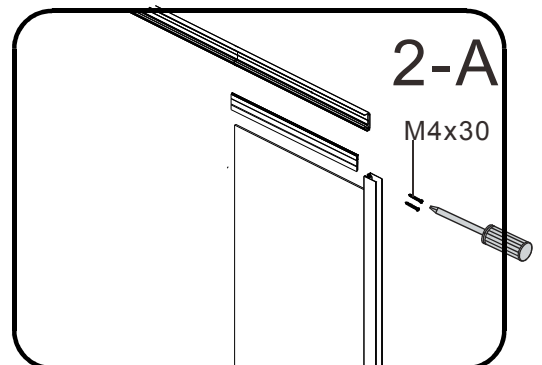
M4*30

Φ

Step2

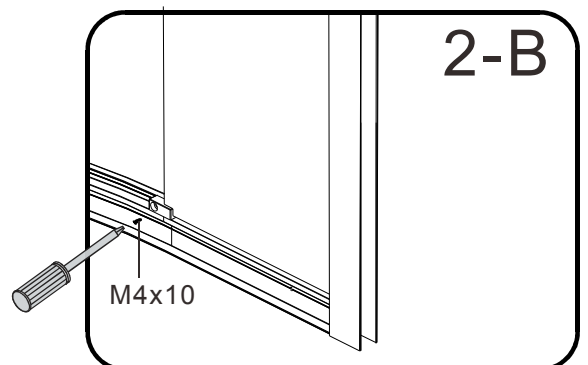


2-A



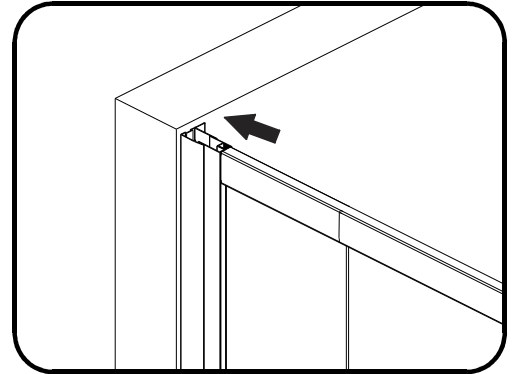
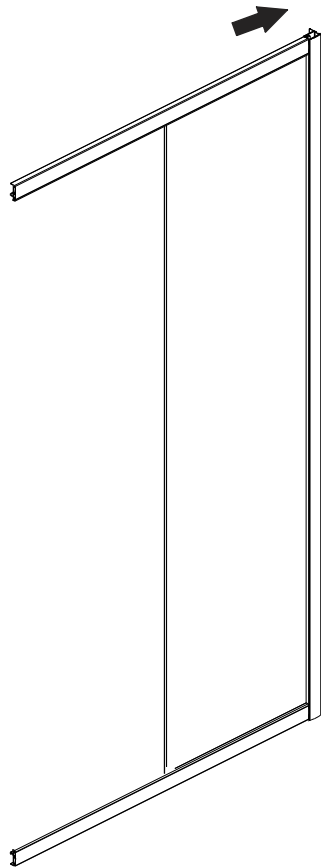
M4x30

2-B

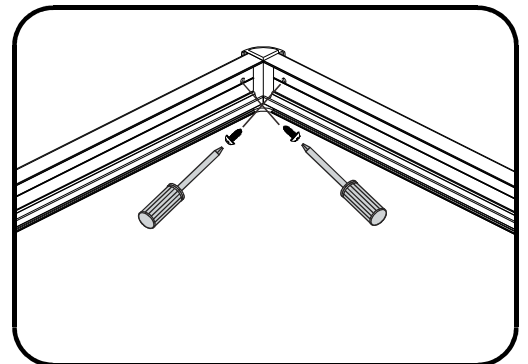
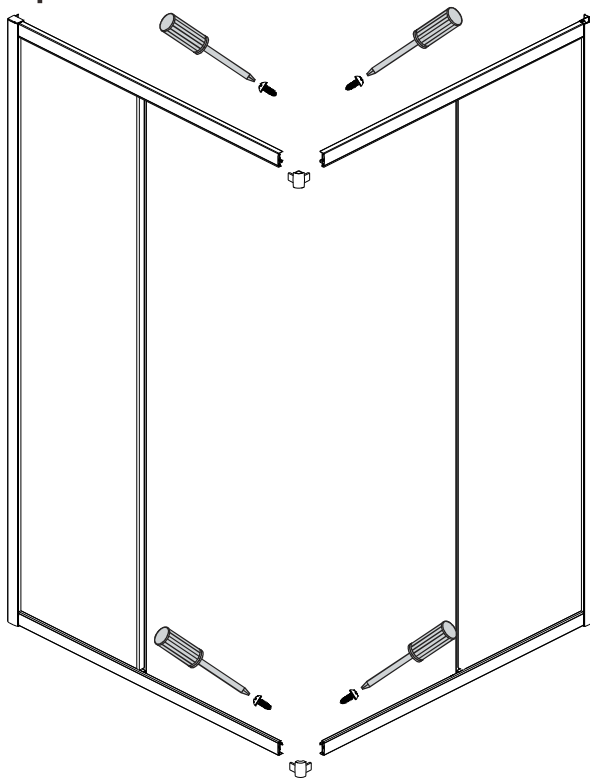


M4x10

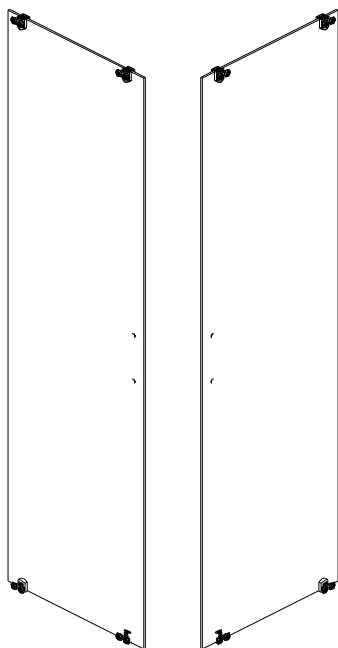
Step3



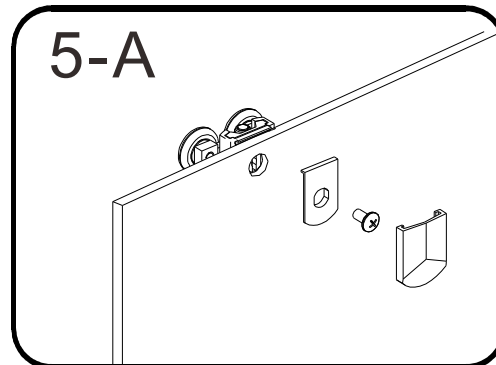
Step4



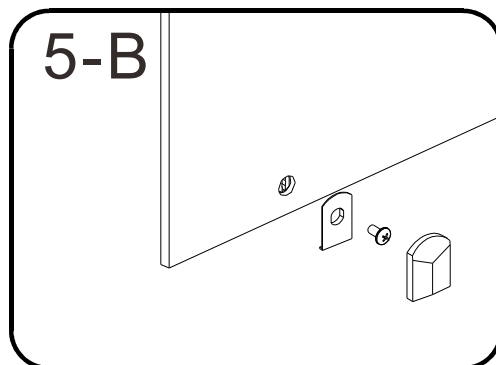
Step5



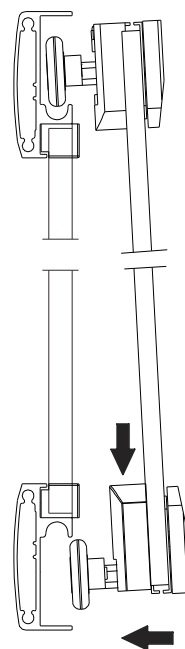
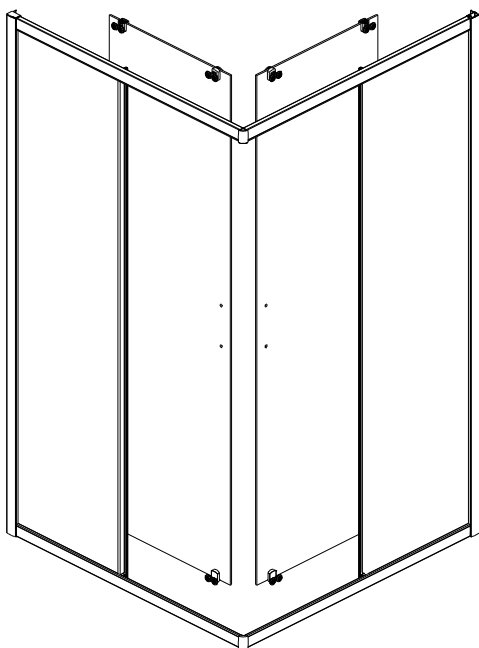
5-A



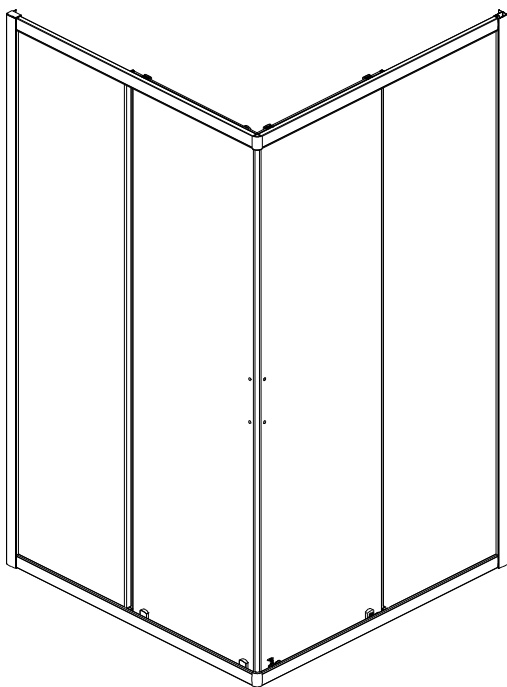
5-B



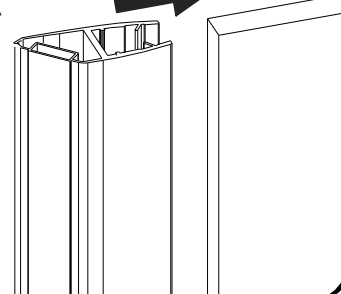
Step6



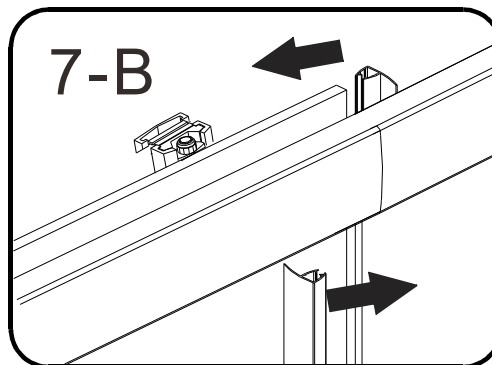
Step7



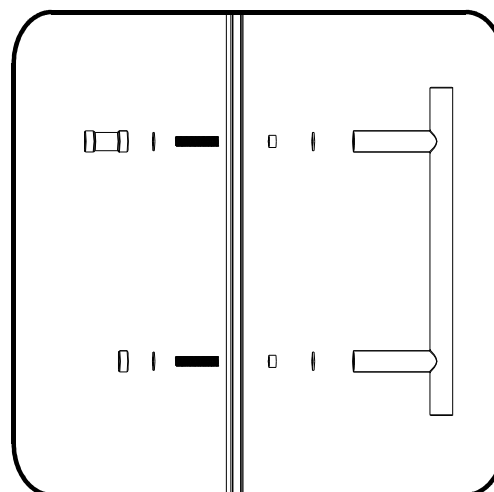
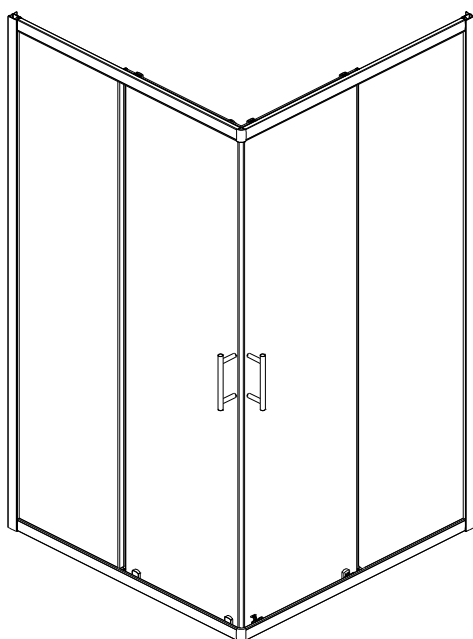
7-A



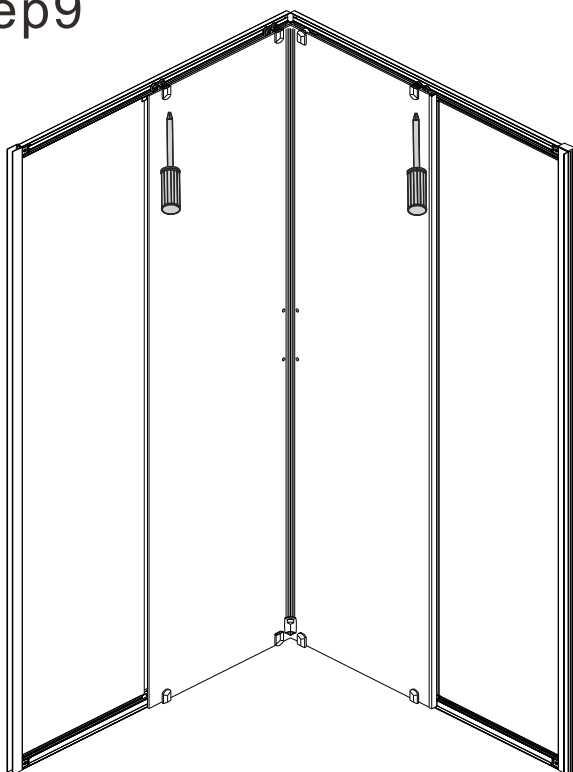
7-B



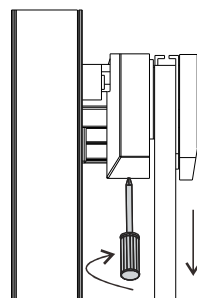
Step8



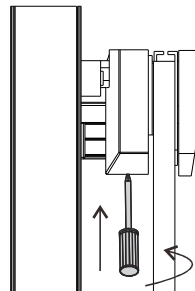
Step9



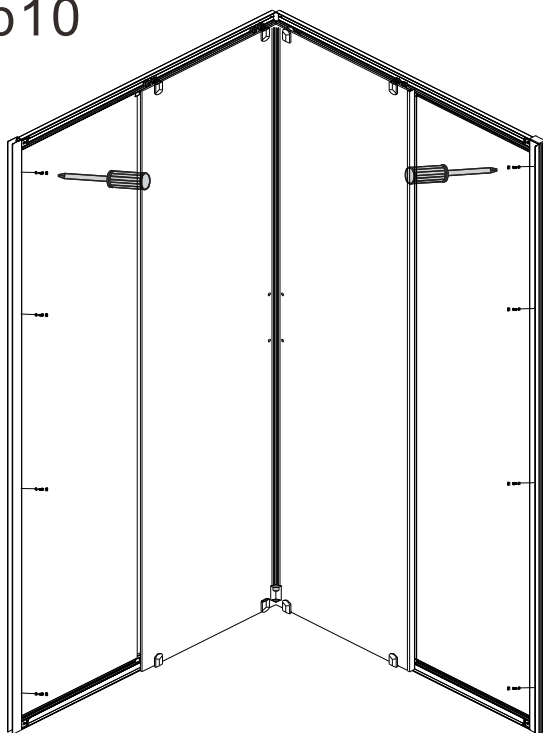
9-A



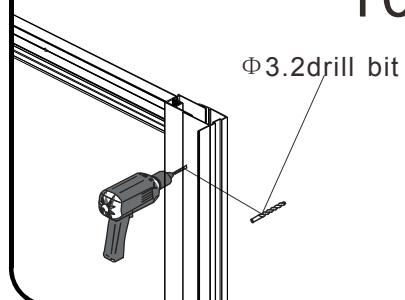
9-B



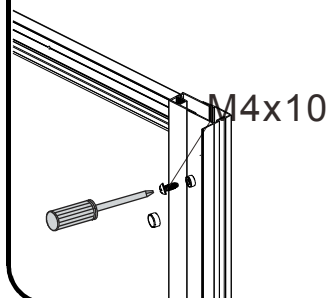
Step10



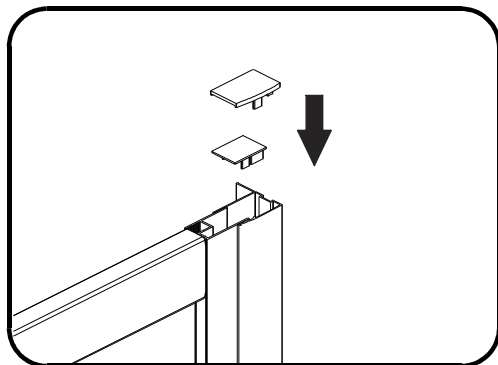
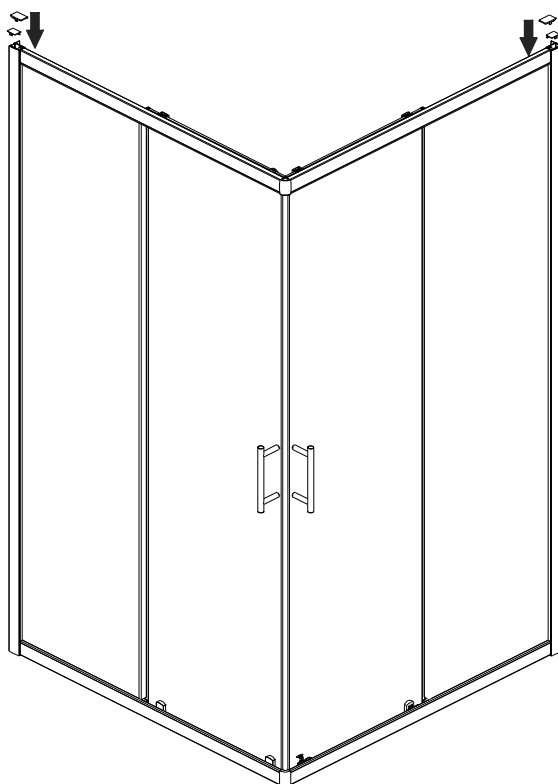
10-A



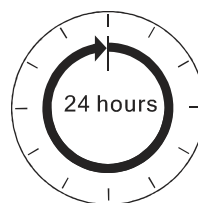
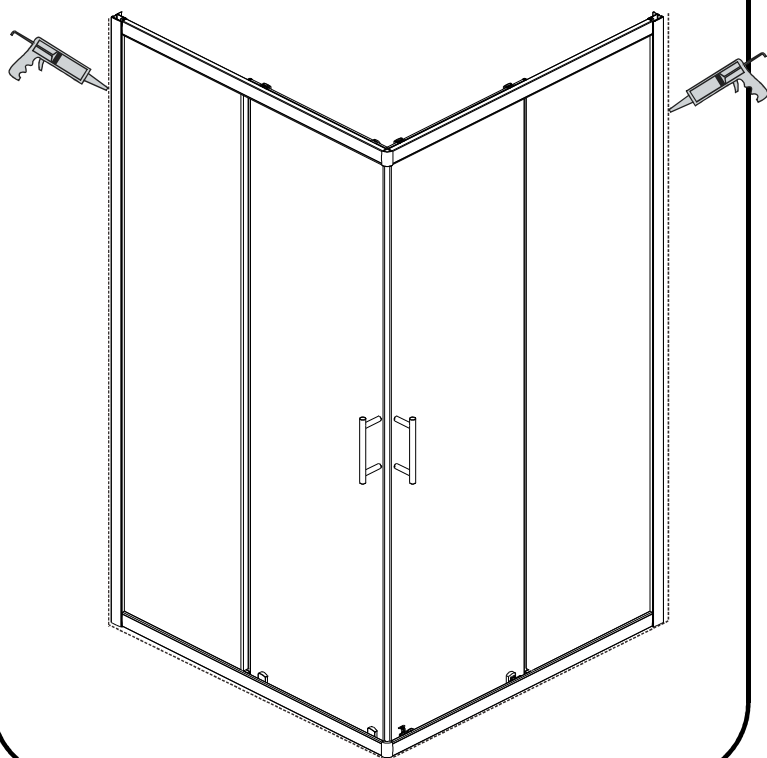
10-B



Step11



Step12



Allow 24 hours for silicone to dry before use.

Silicone on the outside edge only